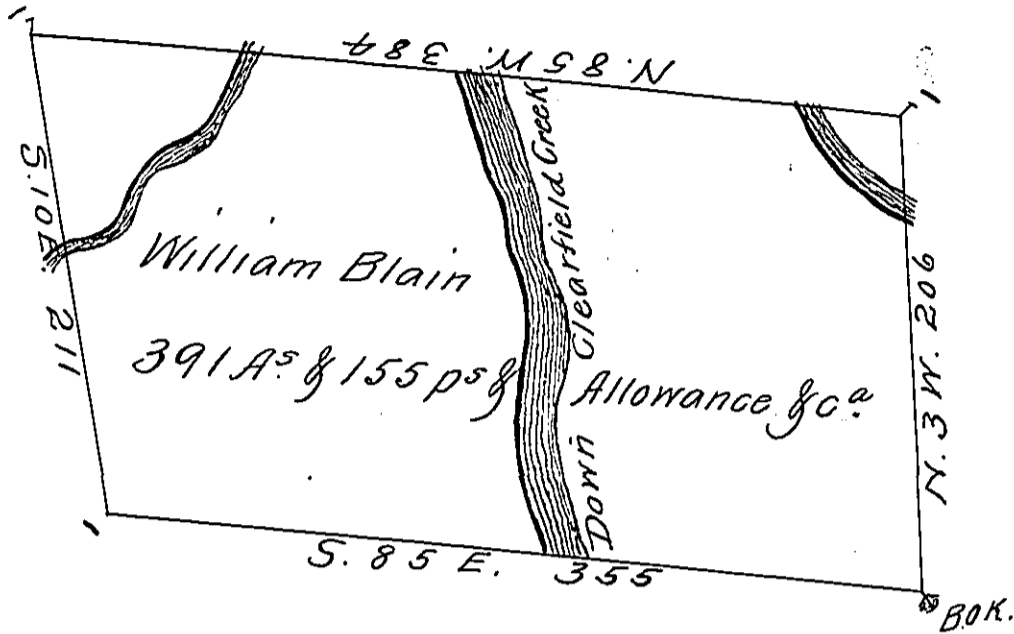


M-181

William Miller



James Blain

A Draught of a Tract of Land Situate on the Clearfield Creek
 Adjoining James Blain in the County of Bedford Containing
 three hundred and Ninety One Acres & one hundred and fifty
 five perches & the Usual Allowance of Six per Cent for Roads,
 Surveyed 2^d day of November 1784 - In pursuance of a Warrant
 granted to William Blain -

dated 1st July 1784 -

George Woods D.S.

To John Lukens Esq. S.G.

IN TESTIMONY that the above is a copy of the original remaining on file in
 the Department of Internal Affairs of Pennsylvania, made
 conformably to an Act of Assembly approved the 16th day of
 February, 1833, I have hereunto set my Hand and caused
 the Seal of said Department to be affixed at Harrisburg,
 this twenty eighth day of September 1911

Henry Fouck
 Secretary of Internal Affairs.